



The Environmental Records Centre for Cornwall and the Isles of Scilly

Feock Parish Council
Wildlife and Landscape Project

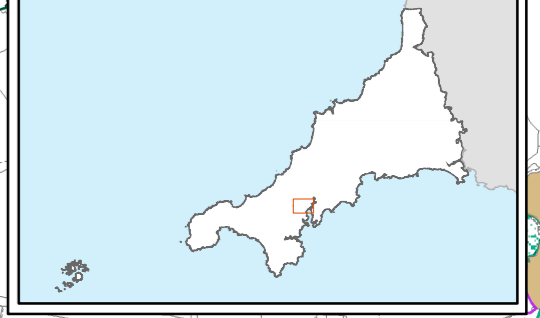
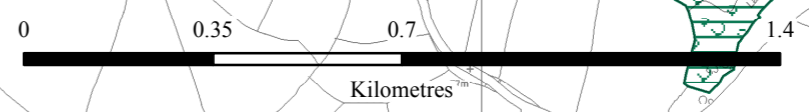
SW 815 394 and environs
Showing ERCCIS UK BAP
Priority Habitat



Recording | Mapping | Informing

Not to be published or passed to third parties without prior written permission.
Please refer to the signed ERCCIS Information Request Form for details.
© Crown copyright and database rights 2016 Ordnance Survey 100049047

Scale 1:14,000 at A2 28/XI/2016
Author: Nic Harrison-White

Legend

Feock Parish
Cornwall Parishes

Reedbeds (BAP PHT)
Determinant
Definitely is
Definitely present within polygon but not mappable
Probably the Priority Habitat but some uncertainty of interpretation

Upland Mixed Ash (BAP PHT)
Determinant
Definitely is
Definitely present within polygon but not mappable
Probably the Priority Habitat but some uncertainty of interpretation

Fens (BAP PHT)
Determinant
Definitely is
Definitely present within polygon but not mappable
Probably the priority habitat but some uncertainty of interpretation

Coastal Saltmarsh (BAP PHT)
Determiner
Definitely is
Definitely present within polygon but not mappable
Probably the Priority Habitat but some uncertainty of interpretation

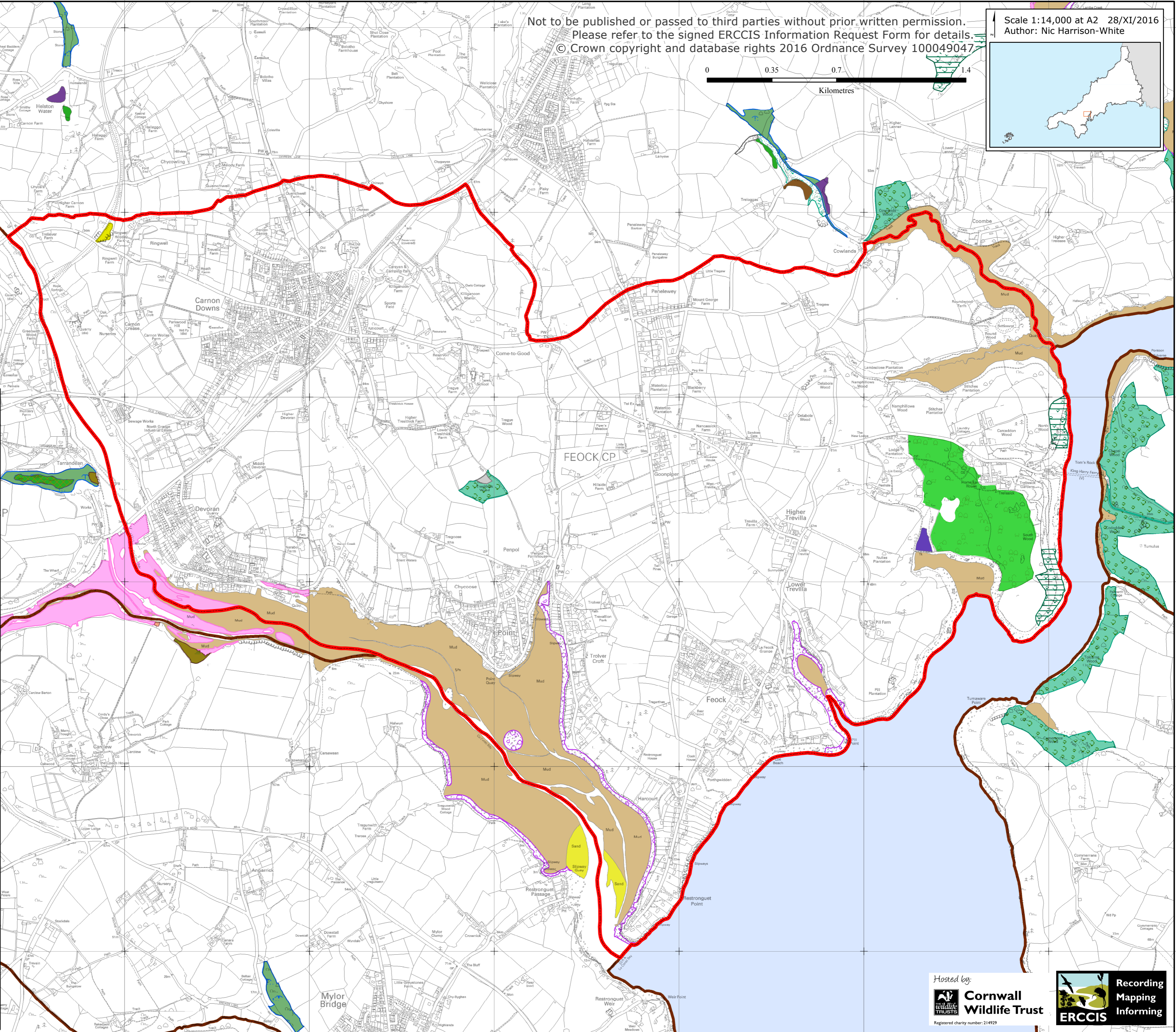
Mudflats (BAP PHT)
OS_text
mud and shingle
sand and mud
Sand and Shingle
Mud
Sand
Shingle

Upland Oak Woodland (BAP PHT)
Determinant
Definitely is
Definitely present within polygon but not mappable
Probably the Priority Habitat but some uncertainty of interpretation

Saline Lagoons (BAP PHT)
PRIDET
Definitely is
Probably the Priority Habitat but some uncertainty of interpretation

Lowland Heathland (BAP PHT)
Determiner
Definitely is
Definitely present within polygon but not mappable
Probably the Priority Habitat but some uncertainty of interpretation

Lowland Woodland Pastures and Parkland (BAP PHT)
PRIDET
Definitely is
Probably the Priority Habitat but some uncertainty of interpretation



Hosted by:



Registered charity number: 214929



Recording Mapping Informing